



ZIPLOK & Cinch Tite XL Seal



Ziplok

Ziplok & Cinch Tite XL seals used in the financial industry for securing currency bags provide quick identification and safe transactions. Seals are also used for securing hazardous waste, tote transport security, and maintaining document integrity during transport to shredding facilities.

APPLICATIONS

- ☞ Armored car companies
- ☞ Chemical plants
- ☞ Courier services
- ☞ Postal services

PACKAGING

- ☞ 1,000 carton: 250 per bag,
- ☞ Gross weight: 13lbs per 1,000

SPECIFICATIONS

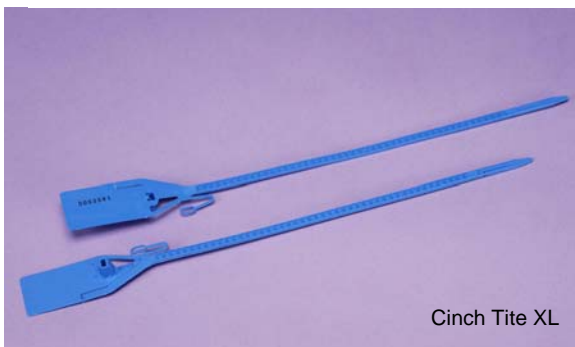
- ☞ Material – Polypropylene or Nylon
- ☞ Available with laser printed bar code, number and corporate logo
- ☞ Tear-off receipt tags available for tracking convenience
- ☞ Numbering up to 7 digits
- ☞ Models available in lengths of 8” to 15”
- ☞ Printing up to 15 characters
- ☞ Colors vary by model – blue, red, green, orange, black, white, and yellow

FEATURES

- ☞ Lead-free coin bag seals
- ☞ Quick installation
- ☞ Tool-less removal available on some models
- ☞ Self-locking and adjustable length
- ☞ Made of all purpose plastic to withstand hot and cold temperatures
- ☞ Special locking teeth increases tamper resistance
- ☞ Design provides multi-locking positions for a tight fit
- ☞ UV-inhibitors and antioxidants are added for extended life
- ☞ Stock seals are available for rush shipments
- ☞ Tension tool available on some models for application ease

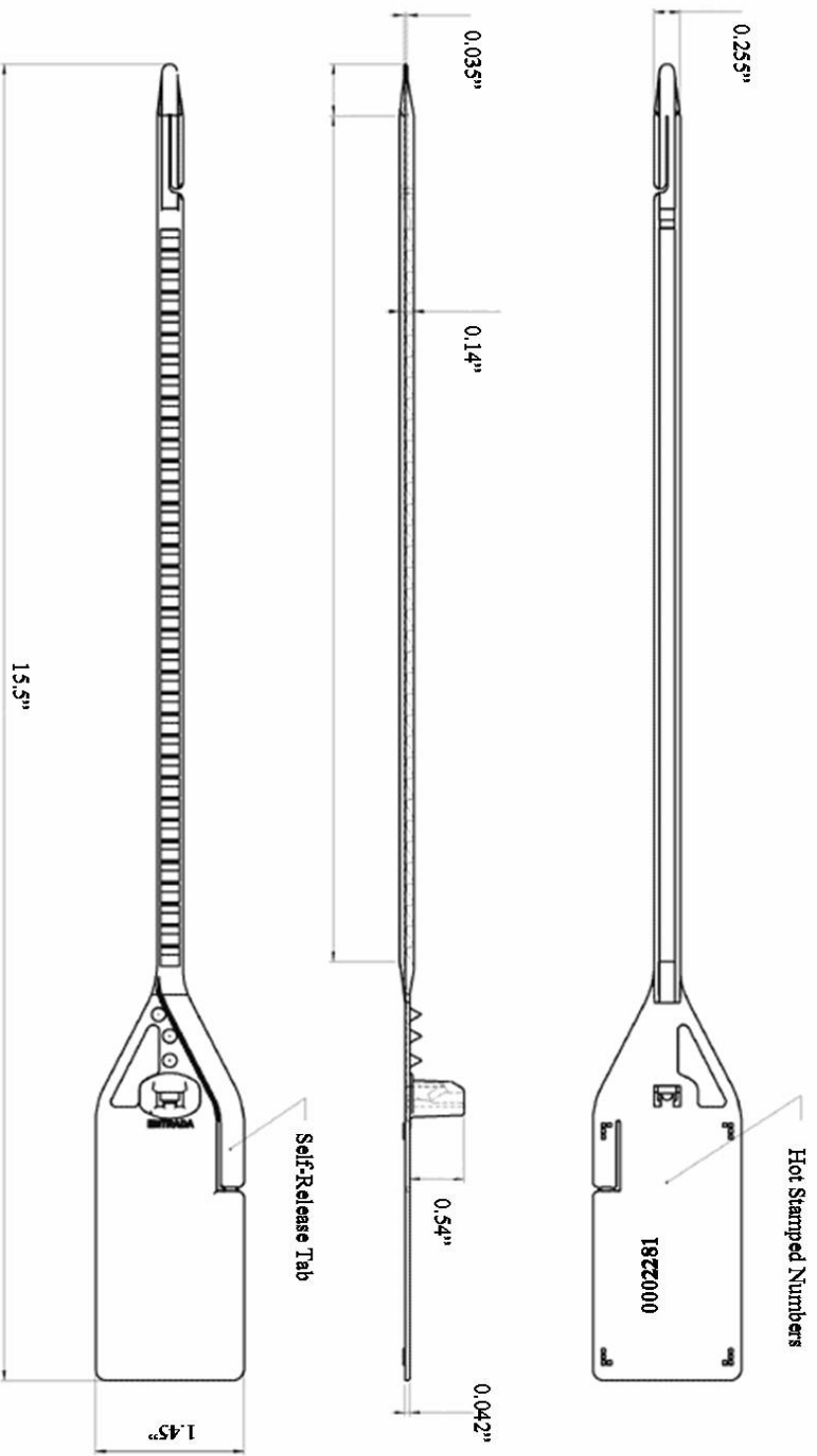
LOCKING INSTRUCTIONS

- ☞ Insert end of label holder through hole in label
- ☞ Insert narrow end of seal through opening in label holder
- ☞ Pull strap tight either by hand or with tensioning tool
- ☞ Record seal number as required
- ☞ Pull tab at designated tear-off location until the seal lock and the tab separate from the strap
- ☞ The seal may not be reused

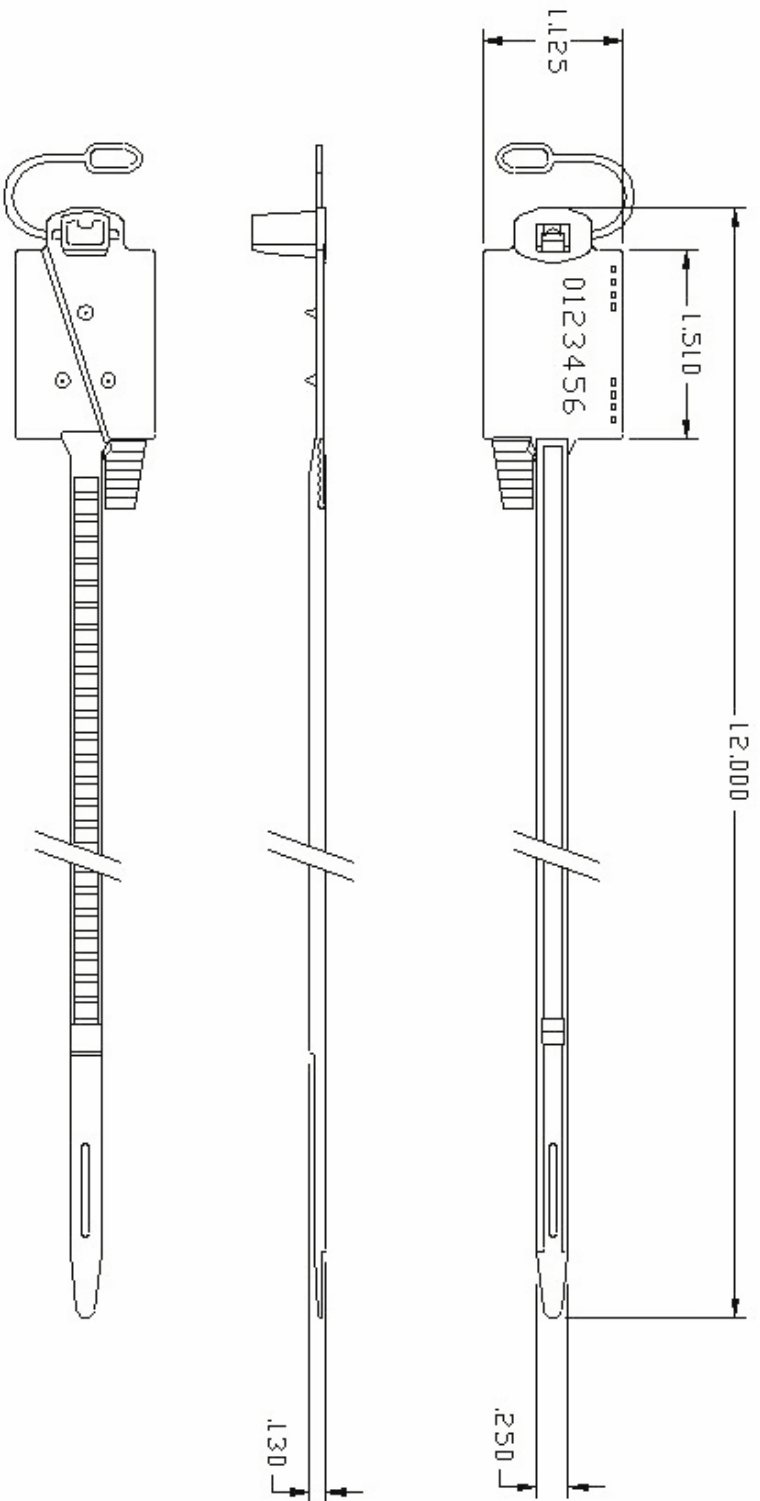


Cinch Tite XL





Cinch Tite XL



Ziplok - Releasable