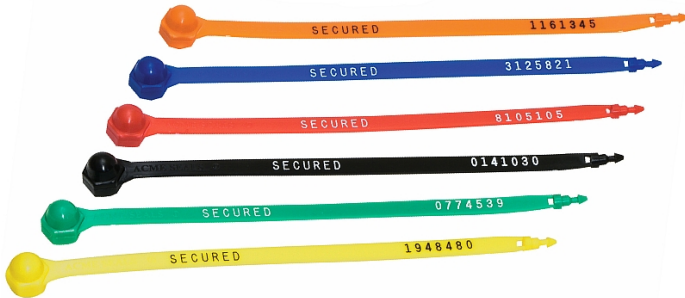




## PLASTIC TRUCK SEALS

Plastic trucks seals are widely used within the transportation industry. Smooth edges and breakable by hand make the Plastic Truck Seal perfect for applications where increased handling is required. Dissimilar plastic materials are used in the seal construction. These materials make tampering attempts extremely difficult and tamper detection an easy task.



### FEATURES

- ↗ Consecutive numbering and company name hot stamped in a contrasting color
- ↗ Stock seals are available for rush shipments
- ↗ Stock seals are available in red, blue, green, white, or yellow plastic with the word "SECURED" and sequential numbers printed on the seal
- ↗ Custom seals are available in red, blue, green, white, yellow, black, and orange with white or black print
- ↗ US Customs in Bond & HM Customs & Excise Approved

### APPLICATIONS

- ↗ Containers and bins
- ↗ Fire doors
- ↗ Rail car doors
- ↗ Shipping containers
- ↗ Truck and trailer doors

### PACKAGING

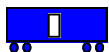
- ↗ 10 seals per mat
- ↗ 1,000 seals per box
- ↗ Box dimensions: 11" x 14" x 11"
- ↗ Gross weight: 9 lbs. per 1,000
- ↗ Custsom orders will be packed up to 2000/box

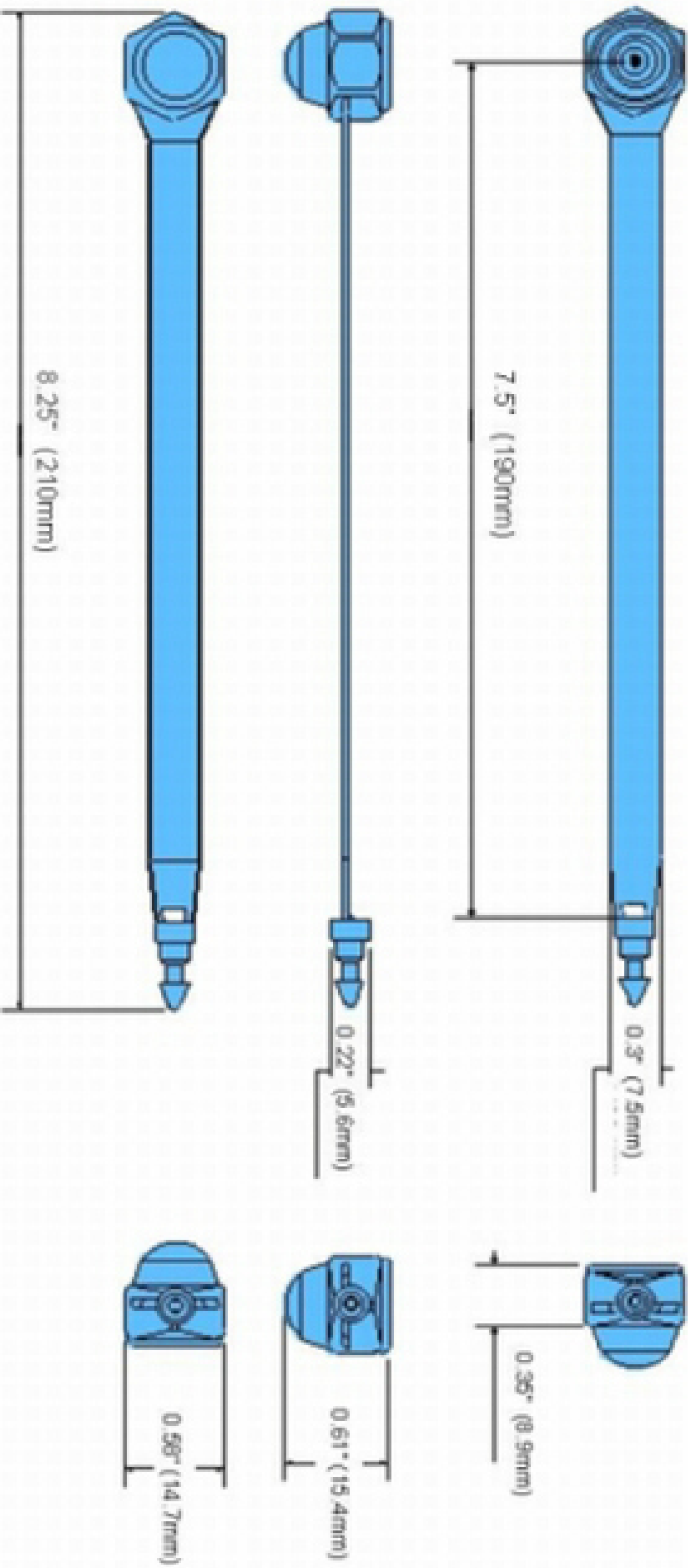
### LOCKING INSTRUCTIONS

- ↗ Insert arrow head into locking barrel as far as it will go until you hear a click
- ↗ Tug on seal to ensure it is fully locked
- ↗ Record seal number as required

### SPECIFICATIONS

- ↗ Materials: Polypropylene and Acetal
- ↗ Operational length: 7.5"
- ↗ Hot stamping of up to 20 characters (28 with purchase of a die) and up to an 8 digit number
- ↗ Colors that are available are white, green, yellow, orange, blue, black, or red.
- ↗ Average breaking strength is 44 lbs





Plastic Truck Seal