



BOLT SEALS

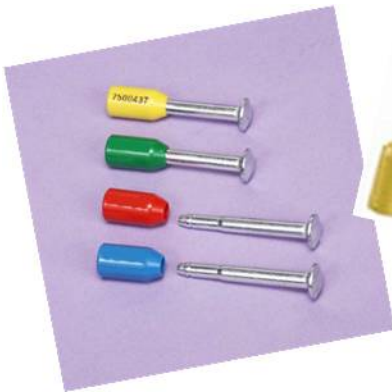


Bolt seals are high-strength security seals used on shipping containers, railroad and air freight containers. The solid metal core head and a locking cylinder that is encased in shock proof plastic makes for a high level security seal and an efficient tamper deterrent.

ISO/PAS 17712 & C-TPAT Compliant

FEATURES

- ↺ The solid metal core head makes it impossible to knock seal through latch hardware
- ↺ Must be removed with bolt cutters
- ↺ Extremely economical, high level security at an affordable price
- ↺ High security laser engraving



PACKAGING

- ↺ 200 per carton (std)
- ↺ Gross weight: 35 lbs. (std)
- ↺ 200 per carton (SnapLock)
- ↺ Gross weight: 35 lbs. (SnapLock)

APPLICATIONS

- ↺ Cargo container doors
- ↺ Rail car doors
- ↺ Railroad and air freight containers
- ↺ Ship containers

LOCKING INSTRUCTIONS

- ↺ Insert pin through door catch
- ↺ Push numbered locking cylinder over end of pin until click is heard
- ↺ Click indicates that locking ring is activated
- ↺ Pull on cylinder to ensure seal is locked properly
- ↺ Record seal number as required

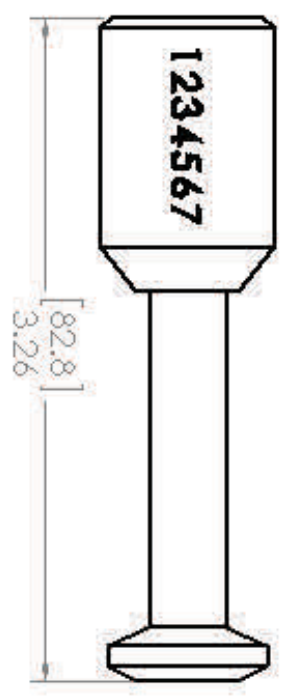
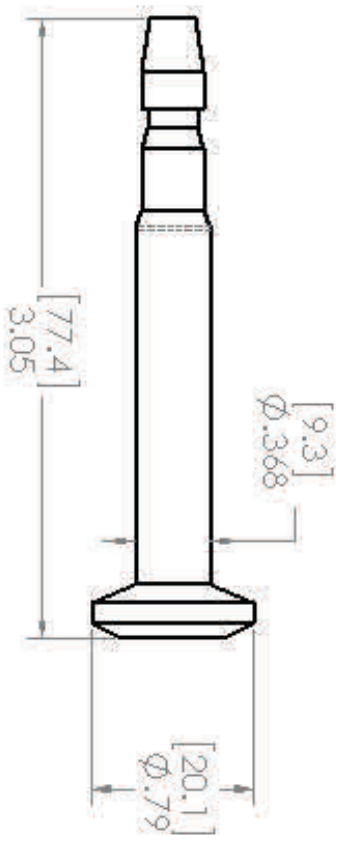
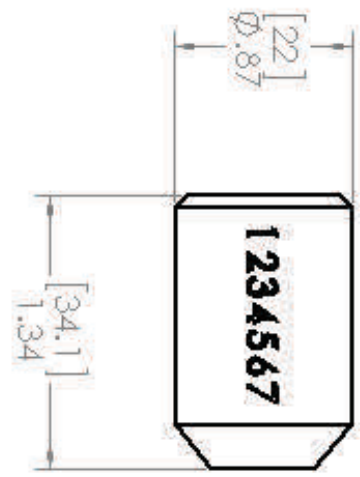


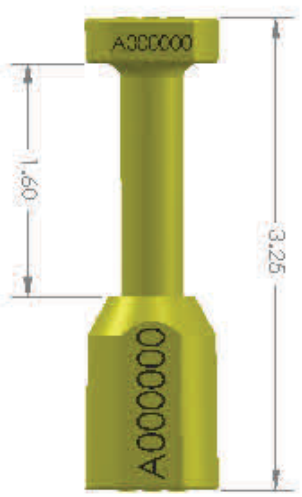
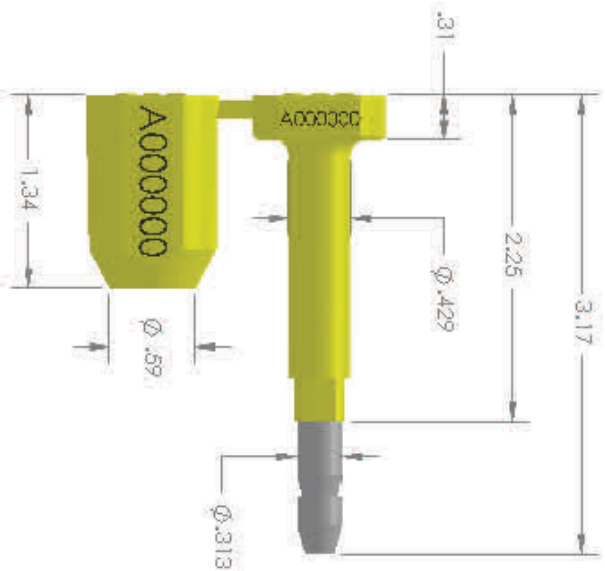
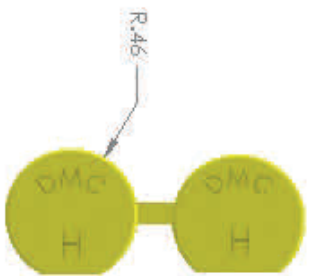
SPECIFICATIONS

- ↺ Shock resistant plastic cylinders available in blue, green, red, yellow, or white (white also available with a bar-coded number sequence) SnapLock stocked in red, yellow, green, orange, & blue
- ↺ Materials – carbon steel with zinc finish / shock resistant plastic
- ↺ Stock seals available for immediate shipments pre-numbered with a 7 digit consecutive number
- ↺ Company name stamped up to 6 characters
- ↺ Pull strength: 3,000+ lbs.



Bolt Seal





Snaplock