



LEAD & WIRE SEALS and Lead Press



Lead and wire seals are often used with small diameter openings such as drums, hoppers and valves. Seals are available with copper, galvanized, tinned, bright annealed, monel or stainless steel wire. The lead and wire seals come pre-assembled or the components are available separately. Hand presses are available blank or with custom engraved letter/logo dies.

APPLICATIONS

- ↺ Drums
- ↺ Hoppers
- ↺ Valves
- ↺ Any application with a small diameter opening

LOCKING INSTRUCTIONS

- ↺ Place wire through opening of item to be sealed
- ↺ Pull wire through hole in seal to achieve proper length of loop desired
- ↺ Place lead part of seal into press and fully compress – this will close the openings in the lead seal
- ↺ Gently pull on seal to check if it is properly locked
- ↺ Record seal number as required

SPECIFICATIONS

- ↺ Lead diameters available: 5/16", 7/16", 3/8", 1/2",
- ↺ A star shaped lead is available with sequential numbering and lettering
- ↺ Lead seals without wires are available with two holes and a connecting slot for increased security
- ↺ Plain lead with two holes also available
- ↺ Wire is available in copper, galvanized, tinned, bright annealed, monel or stainless steel
- ↺ Wire also available with 2, 3 or 4 strands
- ↺ Numerous wire gages are available for custom applications

FEATURES

- ↺ Numerous combinations of lead and lengths of wire available to suit the needs of your company
- ↺ Sealing press available with dies to include numbering or lettering for identification
- ↺ Available pre-assembled or can be assembled at your location
- ↺ Press – Stainless Steel construction with longer than standard handles make crimping easy

PACKAGING

- ↺ Varies with quantity ordered and seal specifications
- ↺ Standard is 100 per bundle





Dickey Manufacturing Company

Lead Discs, Sealing Wire & Crimping Tool

Lead Disc (diameter)	Can be ordered with no wire, pre-cut wire sections, or wire attached	
	Plain	Slotted
5/16"	X	
3/8"	X	X
7/16"	X	X
1/2"	X	X
9/16"		X
Star Numbered		X



Plain* = Two round holes through disc
 Slotted* = Two square holes with connecting slot.
 Slot allows wire to be embedded within disc when crimped

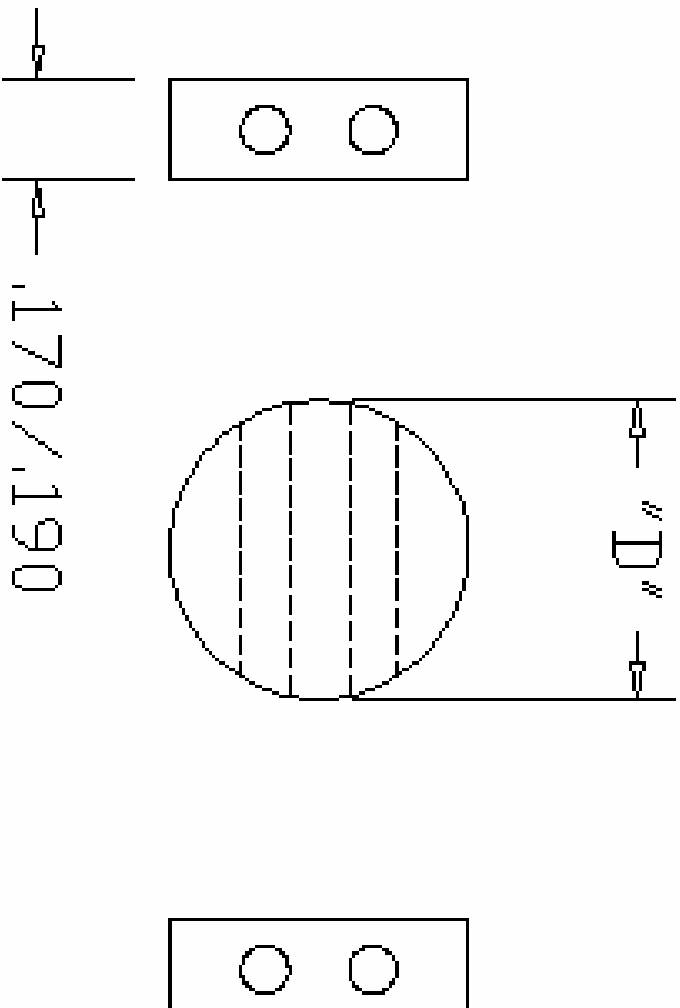
Wire Material	Gauge	Diameter (in)	# Strands
Copper	27	0.014	3, 4
	26	0.016	1, 2, 3, 4
	25	0.018	1, 2, 3
	22	0.025	1, 2
Galvanized	30	0.014	1, 2, 3, 4
	26	0.018	1, 2, 3
	23	0.026	1, 2
	20	0.035	1
Bright Annealed	23	0.026	1, 2
Stainless Steel	27	0.015	3, 4
Monel	27	0.014	3, 4
Tin-Coated Copper	23	0.014	1, 2
Copper Coated Steel	23	0.014	1, 2



Spools are available in 250, 500 or 1000 foot lengths.
 Twisted wire can be ordered in pre-cut lengths

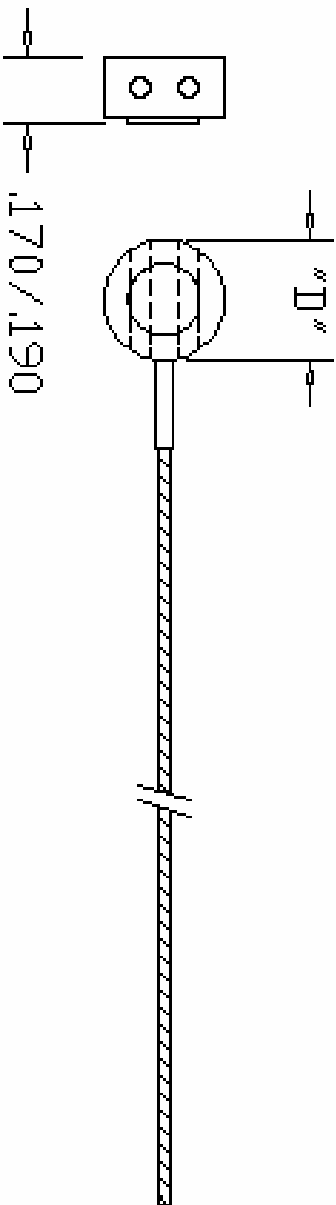


Crimping Pliers
 Stainless steel body
 Long handles for easy crimping
 Custom engraved dies available



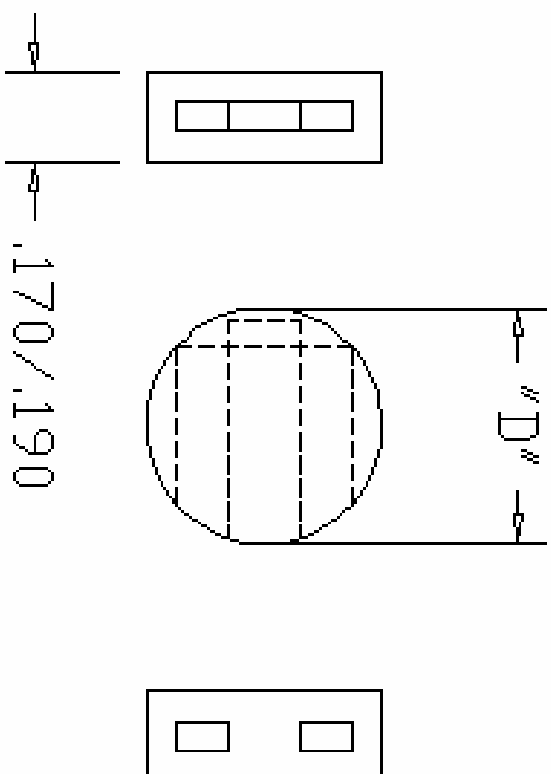
Lead Disc – No Wire

Lead discs available in diameters of 5/16", 3/8", 7/16" or 1/2".



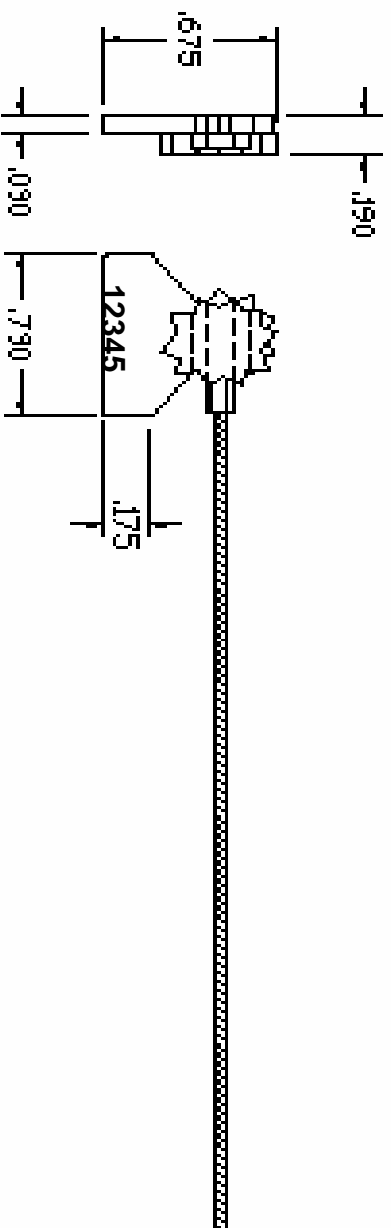
Lead & Wire

Lead discs available in diameters of $5/16"$, $3/8"$, $7/16"$ or $1/2"$.



Slotted Lead

Slotted Lead discs available in diameters of 5/16", 3/8", 7/16" or 1/2".



Star Numbered Lead & Wire

Tag Numbered Seal with wire.

One side with Company Initials and other side with sequential numbering.