



Dickey Manufacturing Company

SnapLock Bolt

Bolt seals are high-strength security seals used on shipping containers, railroad and air freight containers. The solid metal core head and a locking cylinder that is encased in shock proof plastic makes for a high level security seal and an efficient tamper deterrent.

ISO/PAS 17712 & C-TPAT Compliant

FEATURES

- ↗ The solid metal core head makes it impossible to knock seal through latch hardware
- ↗ Must be removed with bolt cutters
- ↗ Extremely economical, high level security at an affordable price
- ↗ High security laser engraving featuring double numbering

PACKAGING

- ↗ 200 per carton
- ↗ Gross weight: 35 lbs.



APPLICATIONS

- ↗ Cargo container doors
- ↗ Rail car doors
- ↗ Railroad and air freight containers
- ↗ Ship containers

LOCKING INSTRUCTIONS

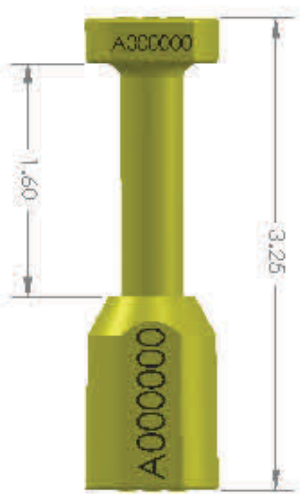
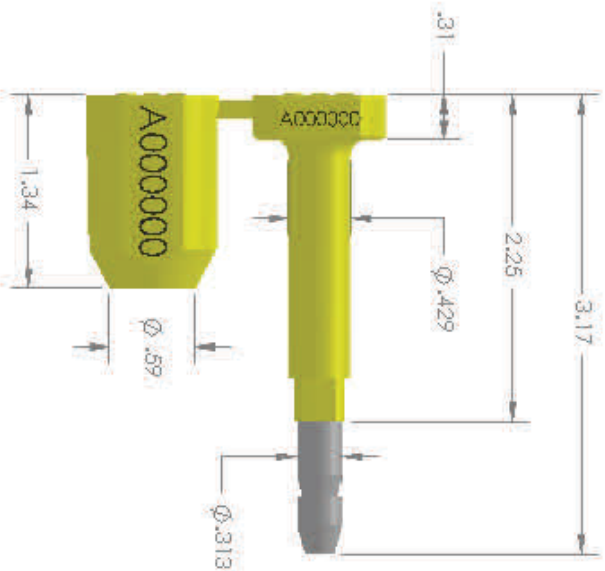
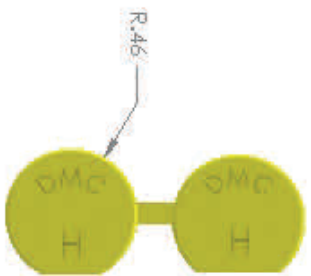
- ↗ Insert pin through door catch
- ↗ Push numbered locking cylinder over end of pin until click is heard
- ↗ Click indicates that locking ring is activated
- ↗ Pull on cylinder to ensure seal is locked properly
- ↗ Record seal number as required



SPECIFICATIONS

- ↗ Shock resistant plastic cylinders available in blue, green, red, yellow, or white (white also available with a bar-coded number sequence) SnapLock stocked in red, yellow, green, orange, & blue
- ↗ Materials – carbon steel with zinc finish / shock resistant plastic
- ↗ Stock seals available for immediate shipments pre-numbered with a consecutive number
- ↗ Custom printed seals available
- ↗ Pull strength: 3,000+ lbs.





Snaplock